



MONTHLY MEMBERSHIP PROGRESS REPORT

Results as of: 6/30/2015

Multiple District 110

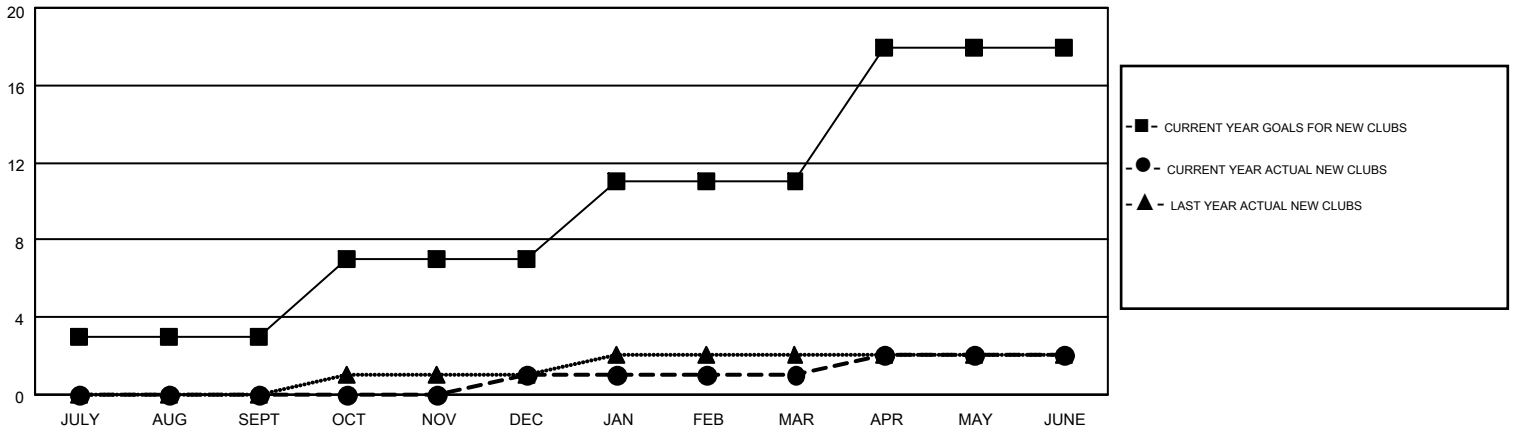
LOCATION: NETHERLANDS

GMT: ELISABETH HADERER

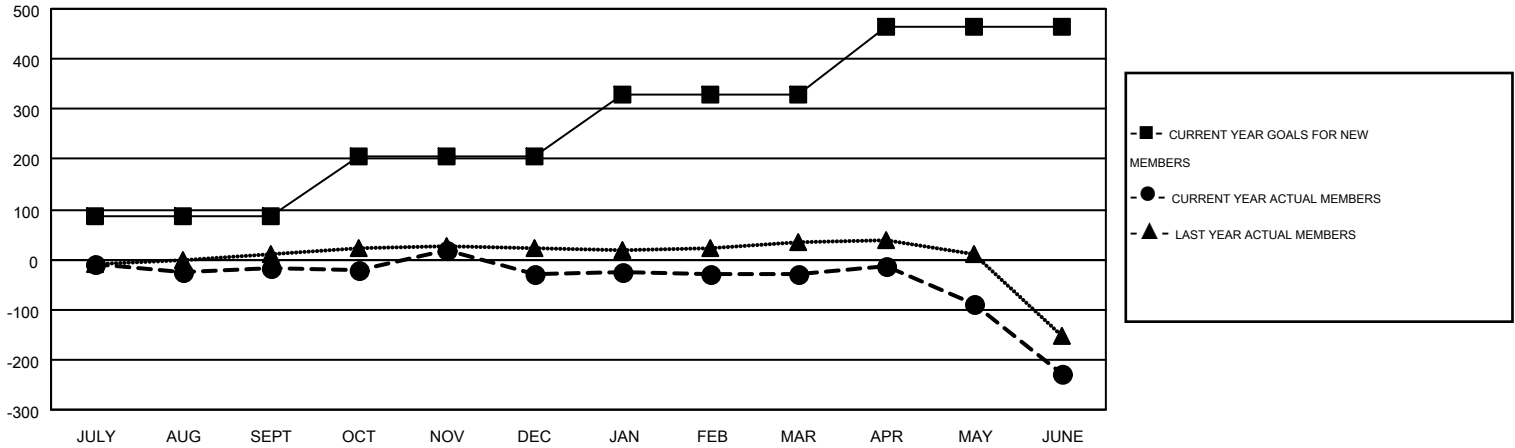
GMT CA 4

| Clubs | | | | | Members | | | | |
|-----------------------|---------------|-----------|---------------|---------------|-----------------------|-----------------|-------------------------------|-----------------|---------------|
| RESULTS FOR 2014-2015 | | | | | RESULTS FOR 2014-2015 | | | | |
| QUARTER | NEW CLUB GOAL | NEW CLUBS | DROPPED CLUBS | NET GAIN/LOSS | QUARTER | NEW MEMBER GOAL | CHARTER AND NEW MEMBERS ADDED | DROPPED MEMBERS | NET GAIN/LOSS |
| JULY/AUG/SEPT | 3 | 0 | 0 | 0 | JULY/AUG/SEPT | 85 | 60 | 79 | -19 |
| OCT/NOV/DEC | 4 | 1 | 0 | 1 | OCT/NOV/DEC | 121 | 184 | 193 | -9 |
| JAN/FEB/MAR | 4 | 0 | 0 | 0 | JAN/FEB/MAR | 124 | 131 | 134 | -3 |
| APR/MAY/JUNE | 7 | 1 | 0 | 1 | APR/MAY/JUNE | 133 | 294 | 491 | -197 |

GOALS AND ACTUAL NEW CLUBS CUMULATIVE



GOALS AND ACTUAL MEMBERS CUMULATIVE



| | | | |
|------------------------|--|---|----------------|
| DROPPED CLUBS: 0 | 284 CLUBS OF 433 ADDED 1 OR MORE NEW MEMBERS | <u>GENDER DISTRIBUTION</u> | |
| <u>DROPPED MEMBERS</u> | | MALE | 9,831 (86.11%) |
| DECEASED | 66 | FEMALE | 1,586 (13.89%) |
| CLUB CANCELLED | 27 | CLICK HERE FOR HEALTH ASSESSMENT DATA | |
| OTHER | 804 | FAMILY UNIT MEMBERS | 12 |
| TOTAL | 897 | HEAD OF HOUSEHOLD | 6 |
| | | NON-HEAD OF HOUSEHOLD | 6 |